

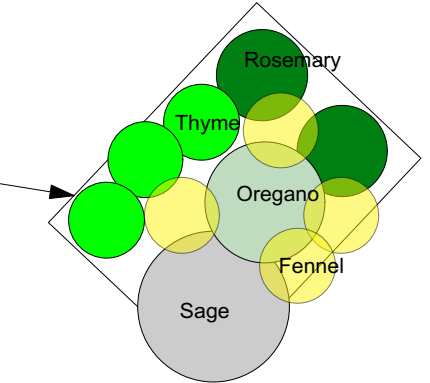
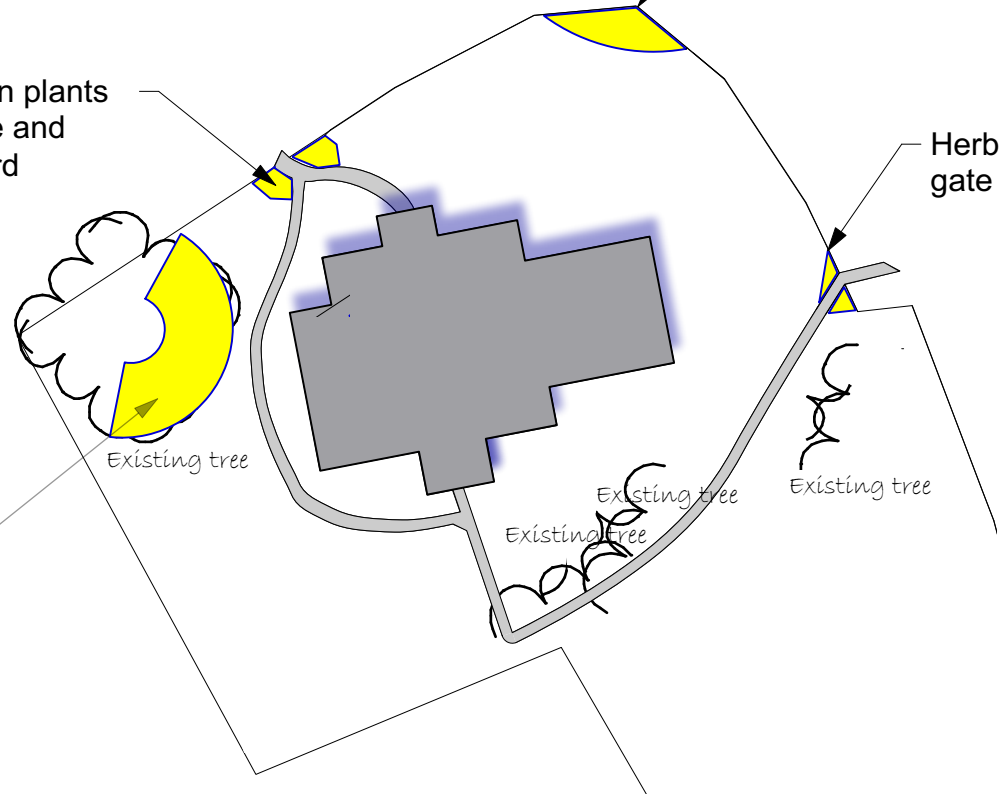
Approximate size of bed 2.5m max width x 7m length
Space left for spring bulbs (later planting phase)

Scented evergreen plants
flanking main gate and
around noticeboard

Summer flowering
perennials

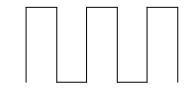
Herb beds flanking side
gate

Early spring bulbs under
existing copper beech



Two matching beds either side of path
Approximate size each 1.5 x 2m

0 2 4 6 8 10 M



NB Scale of drawing is indicative only
Site has not been surveyed

See also accompanying Phase I plants list (excel spreadsheet)



**Enhancing pollinator habitats
in Coton Churchyard
Phase I planting plans
February 2020**